

# Enhancing Landscape Resilience in Oregon

## Oregon's Landscape Resiliency Strategy & Program Execution

SENATE NATURAL RESOUCHE HEARING COMMITTEE | SEPTEMBER 27, 2023



# Strategic Framework: Nurturing Resilient Landscapes for Oregon's Future Generations

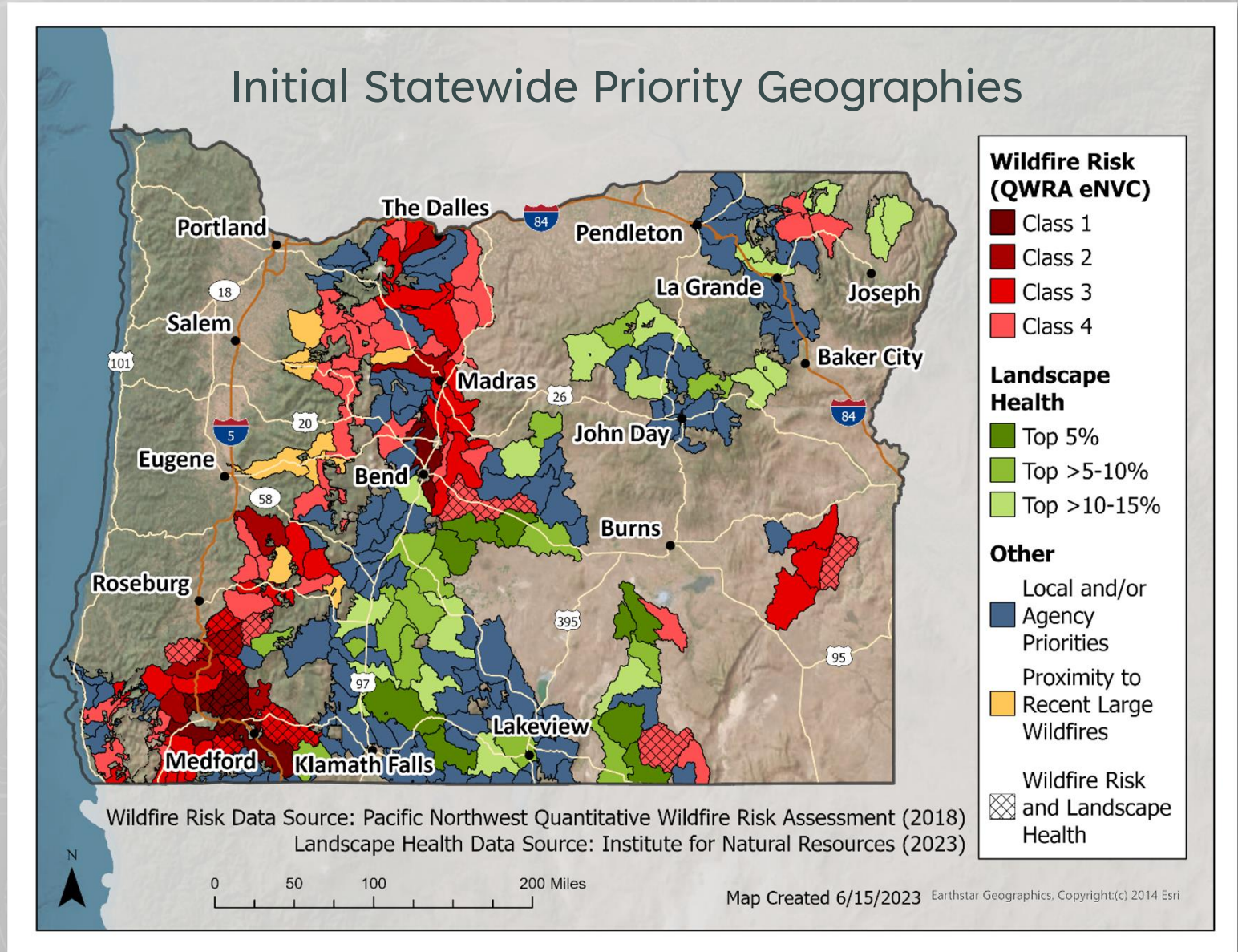
Healthy and resilient landscapes supporting Oregon's social, economic, and ecological needs for future generations.



# Strategy for Coordinated Investments & Action

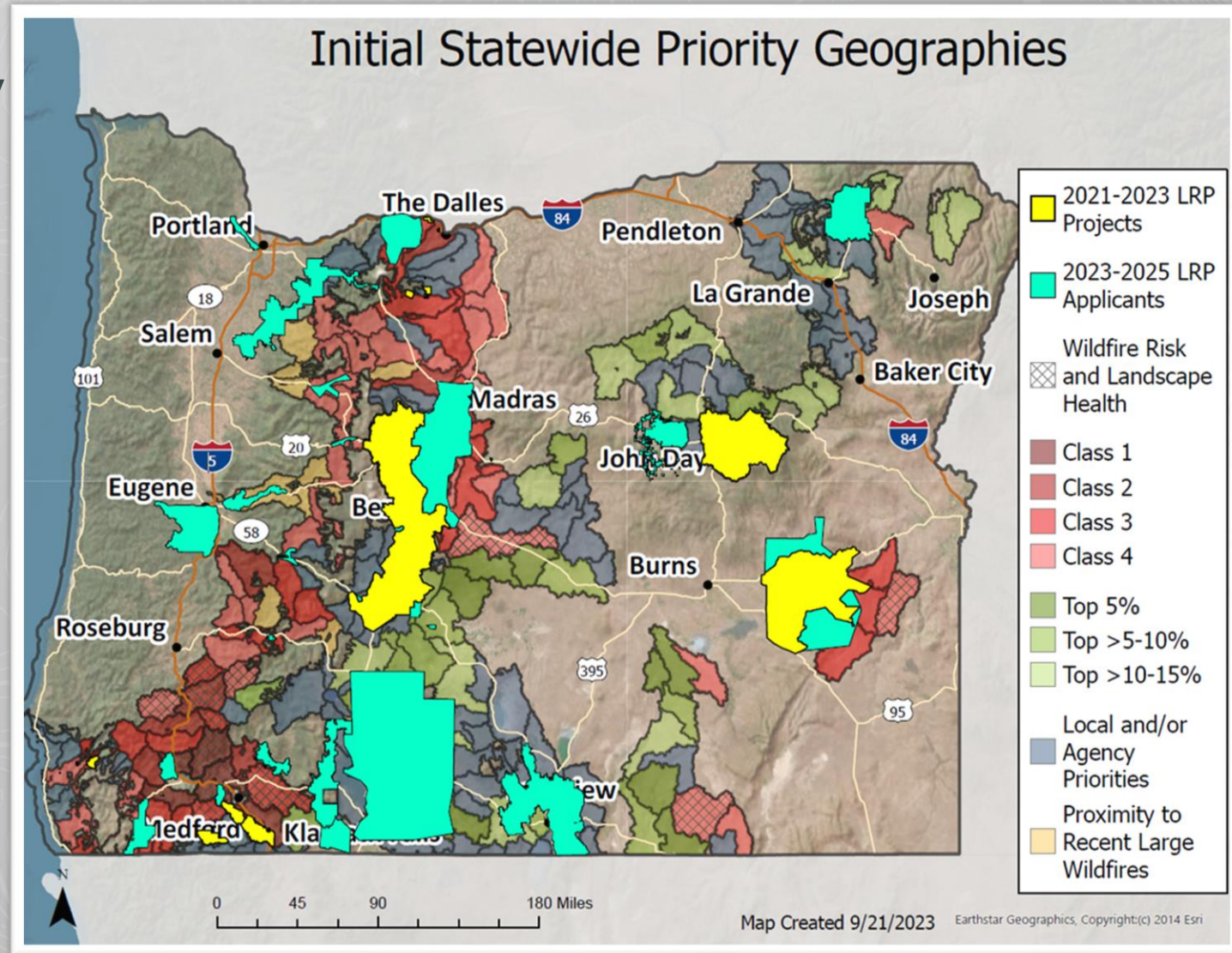
## PRIORITY ACTIONS »

- Capacity Building and Collaboration
- Communications and Awareness
- Planning, Implementation, and Workforce Development
- Treatment and Landscape Restoration
- Monitoring and Research
- Innovative Funding



# Landscape Resiliency Program Accomplishments & Forward Movement

- **LRP 2021-2023 Biennium**
  - 9 Landscape Scale Projects Funded
  - \$20 Million Funded
  - Acres Goal: 210,735, Completed 211,914
  - Match: ~\$12 Million
- **LRP 2023-2025 Biennium**
  - 28 Applications
  - Almost \$40 Million Requested
  - \$10 Million in Funding
  - Match: ~\$19.4 Million



Treatments overlaying the Landscape Resiliency Strategy Priority Map



# LRP Project Types

## PRESCRIBED FIRE



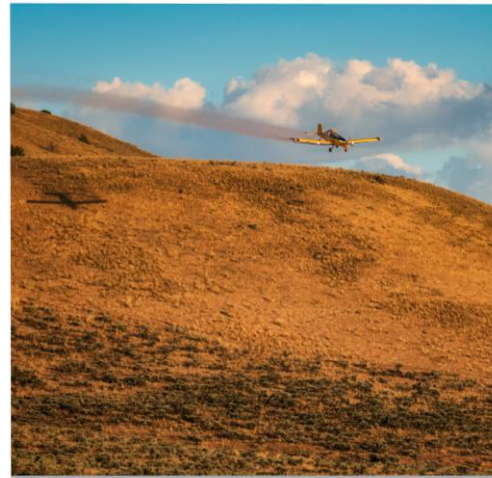
Ashland Forest All Lands  
Restoration

## INSTREAM RESTORATION



Central Oregon Shared  
Stewardship

## INVASIVE REMOVAL



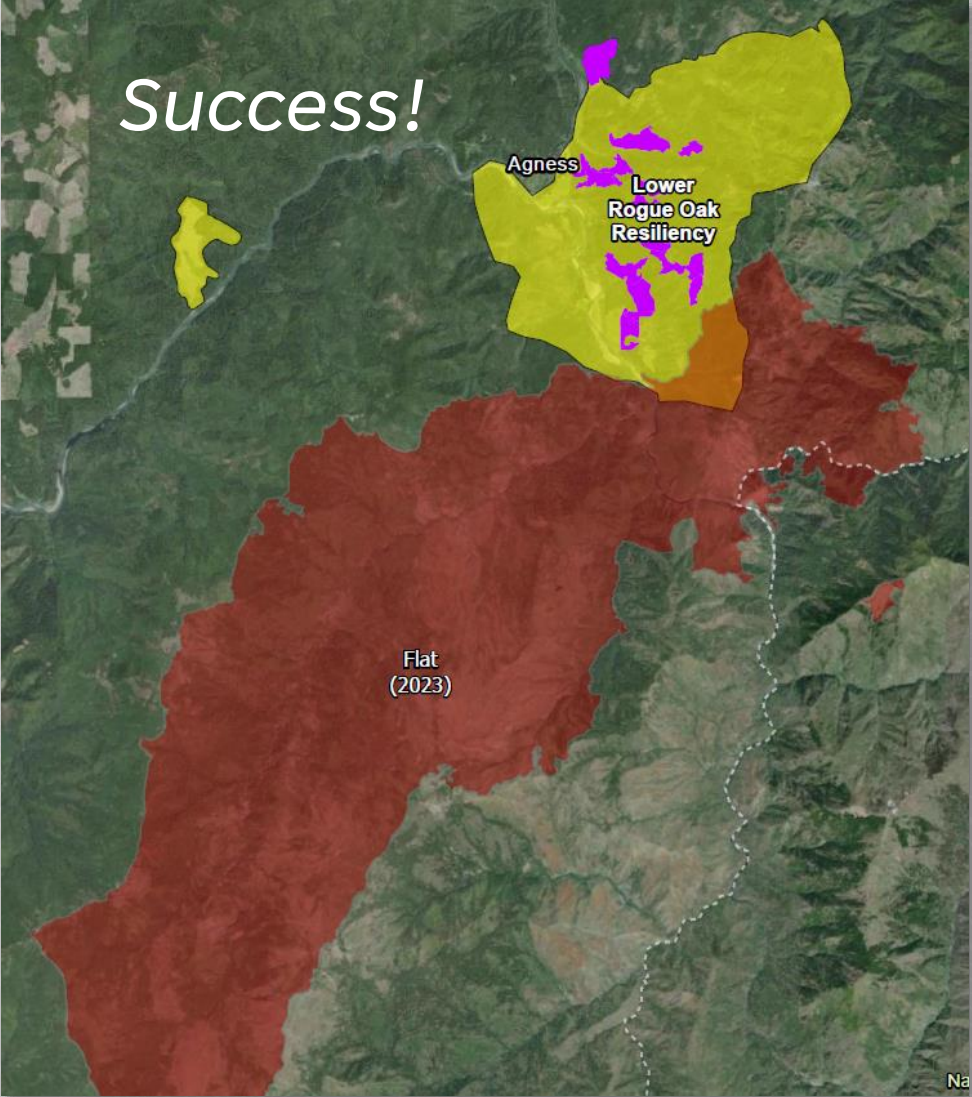
Southeast Oregon Wildfire  
Resiliency

## PROTECTING COMMUNITIES

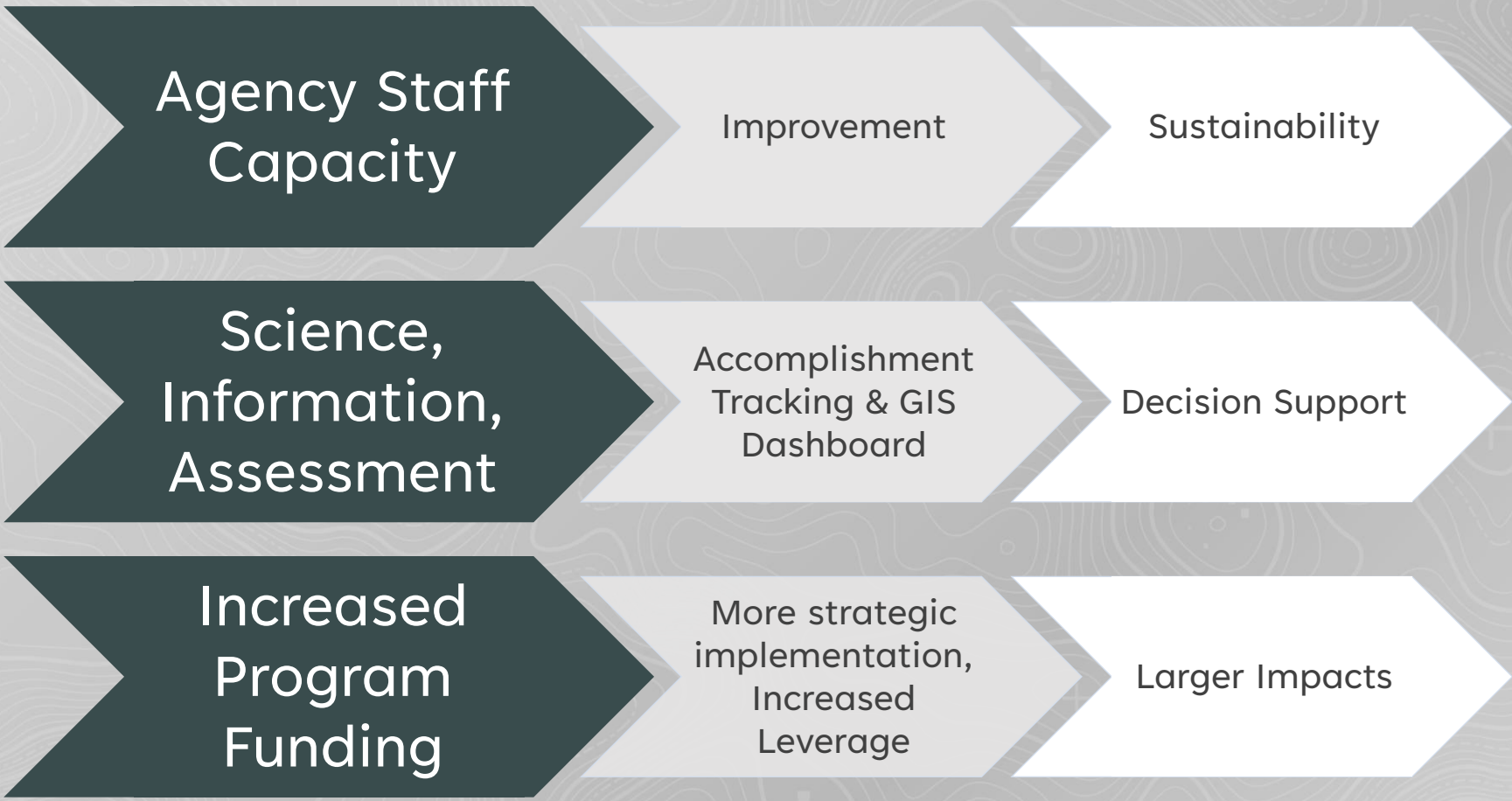


Laurel Butte Landscape  
Resiliency

# Lower Rogue LRP and the Flat Fire



# Challenges & Needs to Increase Program Delivery



*Thank you!*

